

Pulse Valves

for dust collector filters



DUST FILTER COMPONENTS





Certificate of Assessment

European Quality Assurance Limited
hereby grants to

Turbo S.r.l.

Via Po, 33/35
20031 Cesano Maderno
Milano, Italy

whose Quality Management System is in conformance with

ISO 9001:2000

the right to be listed in the Quality Register of Quality Assessed Companies
for the following scope(s)

Progettazione, produzione e commercializzazione di componenti per filtri depolveratori

Design, production and marketing of components for dust collector filters.

Signed

J. de Trussell

DIRECTOR / SCHEME MANAGER

on behalf of European Quality Assurance Limited

This Certificate of Assessment Number **5379** first issued on **23rd July 2004**

and is issued subject to the regulations, and within the accredited scope, of

European Quality Assurance Limited
Navigation House, 48 Millgate
Newark, Nottinghamshire
NG24 4TY



Further clarifications regarding the scope of this certificate and the applicability of ISO 9001:2000 requirements may be obtained by contacting EQA.
The use of the accreditation mark indicates accreditation in respect of those activities covered by the accreditation certificate number 47

EQA Accredited since 5 February 99



TURBO VALVE RANGE

TURBO VALVE

Turbo has a complete range of pulse valves for dust collector filters able to meet all customers technical requirement. Turbo pulse valves are designed, with a flexible and long life diaphragm for a fast opening and closing operation.

Turbo products range includes:

- 1 - Threaded pulse valves
- 2 - Compression fittings pulse valves
- 3 - Flanged pulse valves
- 4 - Pulse valves for square tank
- 5 - Straight through pulse valves



Same valves are available in compliance with ATEX 94/9/EC:

ATEX II 2 GD (zone 1 e 21)

ATEX II 3 GD (zone 2 e 22).

PULSE VALVES

HOW TO ORDER

example

F P 25 02450

F : THREADED VALVE
D : COMPRESSION FITTINGS VALVE
E : FLANGED VALVE
SQ : GLOBAL VALVE FOR SQUARE TANK
FD : STRAIGHT THROUGH VALVE

P = INTEGRAL PILOT
M = REMOTE PILOT

CONNECTION DIAMETERS

$3/4''$ = 20
1" = 25
 $1''^{1/2}$ = 40
2" = 55
 $2''^{1/2}$ = 65
3" = 75

STANDARD VOLTAGES

24V 50-60Hz = 02450
110V 50-60Hz = 11050
220V 50-60Hz = 22050
24VDC = 024DC



Range

- B1 Pulse valve with threaded connection
- B2 Pulse valves with compression fitting
- B3 Pulse valves with flange inlet
- B4 Pulse valves for square tank
- B5 Pulse valves straight through

F Series

D Series

E Series

SQ Series

FD Series

F Series

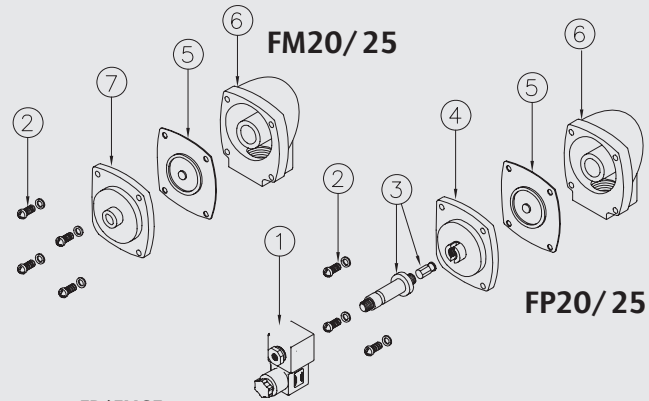


CHARACTERISTICS

Fluid	Filtered and oilfree compressed air
Temperature range	STD diaphragm -40°C; +80°C Viton diaphragm -30°C; +200°C
Operating pressure	min. 0,5; max 7,5 bar
Body e cover	Die cast aluminium
Core tube	Stainless Steel
Plunger	Stainless Steel
Screws	Stainless Steel
Coil insulation	Class H
Connector	PG 9; IP65 DIN 43650 ISO 4400
Standard voltage	230 -110 - 24V / 50-60VHz 19 VA 24VDC 15W

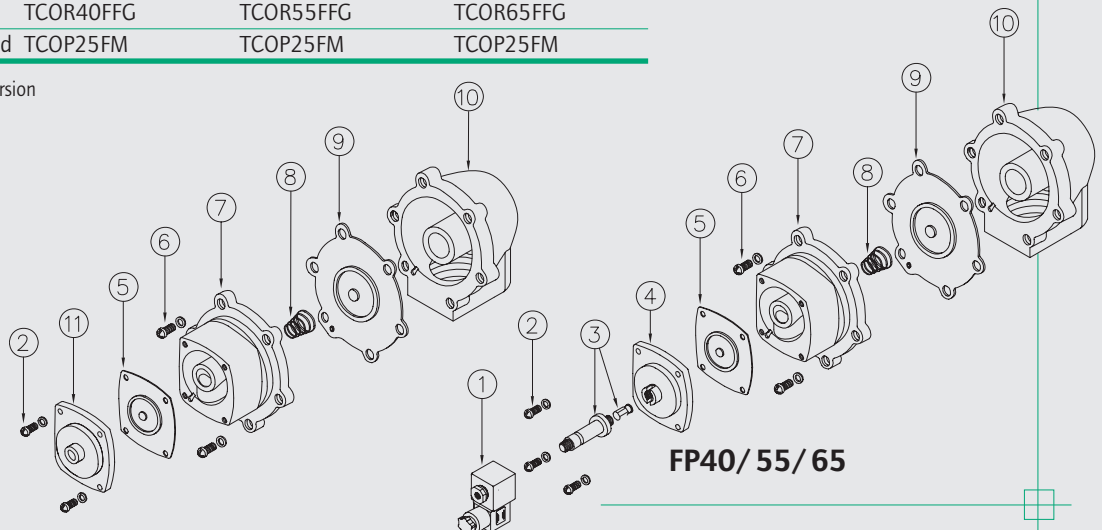
DESCRIPTION	FP/FM20	FP/FM25
1 Coil+Connector	BH10...V/50-60Hz	BH10...V/50-60Hz
2 Screws+Washer	VTE6x20+VROS6	VTE6x20+VROS6
3 Pole assembly	GPC 10	GPC 10
4 Cover	TCOP 25	TCOP 25
5 Diaphragm	M25	M25
6 Body	TCOR20FFG	TCOR20FFG
7 Cover remote operated	TCOP25FM	TCOP25FM

FP Integral solenoid pilot version
FM Remote pilot version

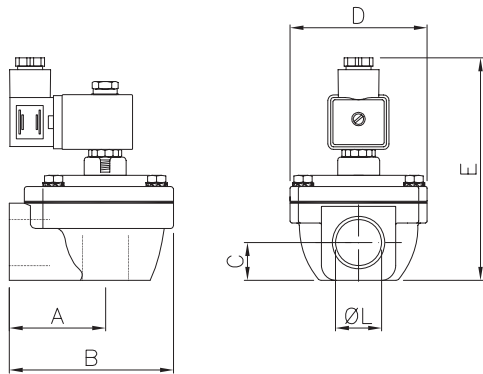


DESCRIPTION	FP/FM40	FP/FM55	FP/FM65
1 Coil+Connector	BH10...V/50-60Hz	BH10...V/50-60Hz	BH10...V/50-60Hz
2 Screws+Washer	VTE6x20+VROS6	VTE6x20+VROS6	VTE6x20+VROS6
3 Pole assembly	GPC 10	GPC 10	GPC 10
4 Cover	TCOP 25	TCOP 25	TCOP 25
5 Diaphragm	M25	M25	M25
6 Screws + Washer	VTE8x20+VROS8	VTE10x25+VROS10	VTE10x25+VROS10
7 Main cover	TCOP 40	TCOP 65G	TCOP 65G
8 Spring	TMOL40	TMOL40	TMOL40
9 Main diaphragm	M40	M55	M75
10 Body	TCOR40FFG	TCOR55FFG	TCOR65FFG
11 Cover remote operated	TCOP25FM	TCOP25FM	TCOP25FM

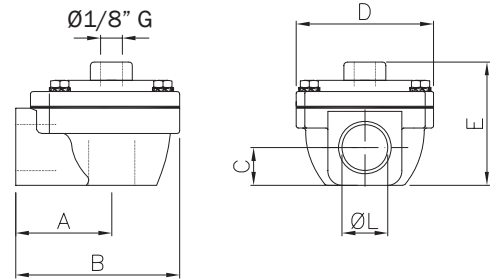
FP Integral solenoid pilot version
FM Remote pilot version



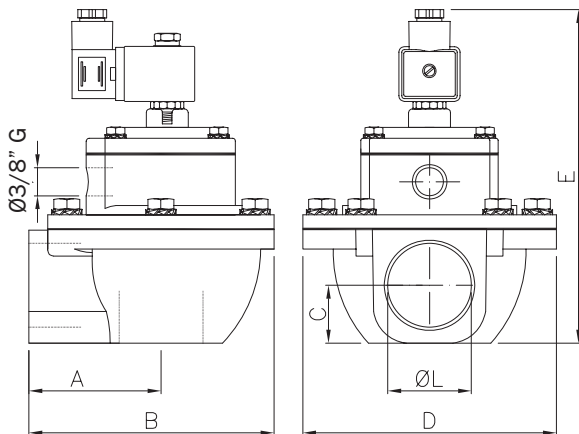
FP20 - FP25



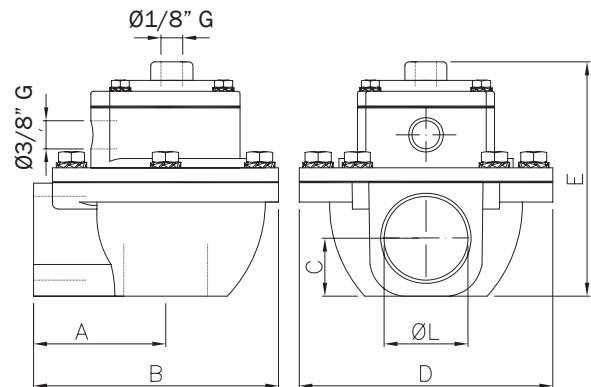
FM20 - FM25



FP40 - FP55 - FP65



FM40 - FM55 - FM65



Model	Ø L (nom)	A	B	C	D	E	Weight (Kg)	Model	E	Weight (Kg)
FP 20	3/4"	52	90	20,5	74	~125	0,6	FM 20	67	0,4
FP 25	1"	52	90	20,5	74	~125	0,5	FM 25	67	0,4
FP 40	1 1/2"	71,3	135	31	140	~188	1,6	FM 40	130	1,4
FP 55	2"	114	203	40	194	~225	3,5	FM 55	167	3,4
FP 65	2 1/2"	114	203	48	194	~225	3,4	FM 65	167	3,2

D Series



CARACTERISTICS

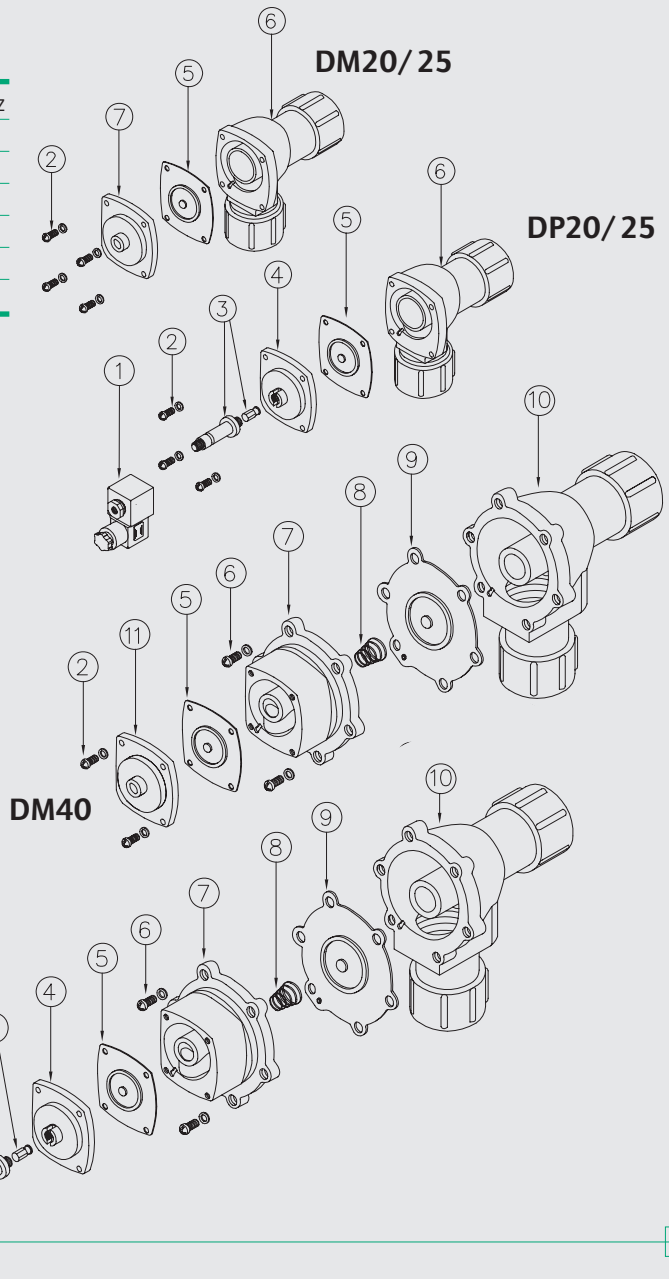
Fluid	Filtered and oilfree compressed air
Temperature range	STD diaphragm -40°C; +80°C Viton diaphragm -30°C; +200°C
Operating pressure	min. 0,5; max 7,5 bar
Body e coover	Die cast aluminium
Core tube	Stainless Steel
Plunger	Stainless Steel
Screws	Stainless Steel
Coil insulation	Class H
Connector	PG 9; IP65 DIN 43650 ISO 4400
Standard voltages	230 -110 - 24V / 50-60VHz 19 VA 24VDC 15W

DESCRIPTION	DP/DM20	DP/DM25
1 Coil+Connector	BH10...V/50-60Hz	BH10...V/50-60Hz
2 Screws+Washer	VTE6x20+VROS6	VTE6x20+VROS6
3 Pole assembly	GPC 10	GPC 10
4 Cover	TCOP 25	TCOP 25
5 Diaphragm	M20	M25
6 Body	TCOR20/25MMG	TCOR25MMG
7 Cover remote operated	TCOP25FM	TCOP25FM

DP Integral solenoid pilot version
DM Remote pilot version

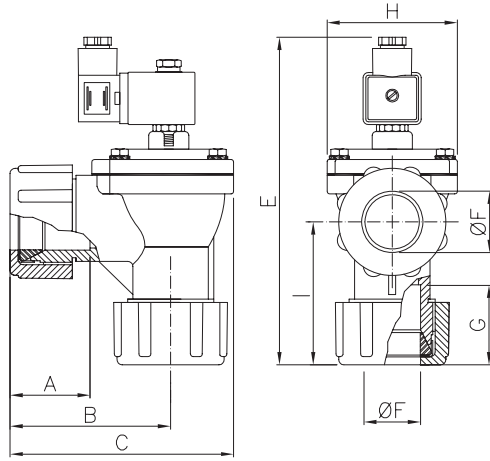
DESCRIPTION	DP/DM40
1 Coil+Connector	BH10...V/50-60Hz
2 Screws+Washer	VTE6x20+VROS6
3 Pole assembly	GPC 10
4 Cover	TCOP 25
4 Remote cover	TCOP25FM
5 Diaphragm	M25
6 Screws + Washer	VTE8x20+VROS8
7 Main cover	TCOP 40N
8 Spring	TMOL40
9 Main diaphragm	M40
10Body	TCOR40MMG
11Cover remote operated	TCOP25FM

DP Integral solenoid pilot version
DM Remote pilot version

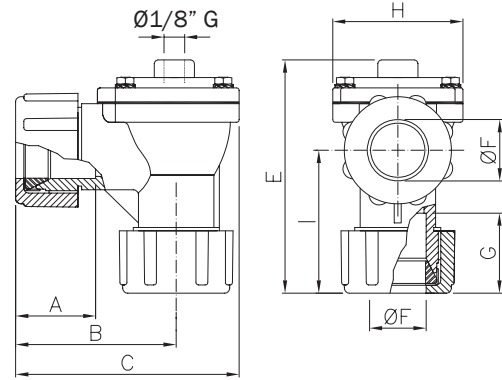


Dimensions mm **D** Series

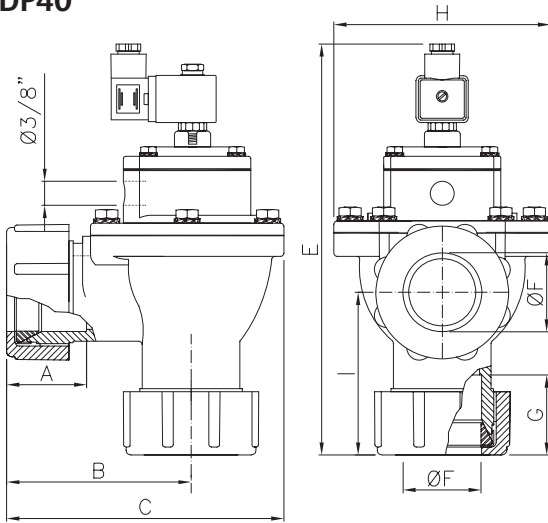
DP20 - DP25



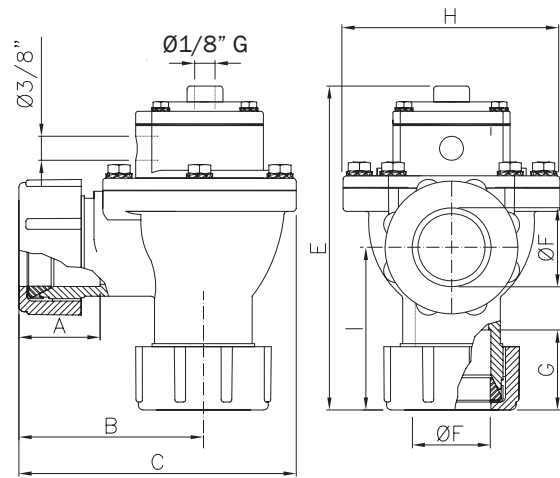
DM20 - DM25



DP40



DM40



Model	\varnothing (nom)	A	B	C	E	F	G	H	I	L	Weight (Kg)	Model	E	Weight (Kg)
DP 20	3/4"	48	90	128	~189	28,5	48	74	80	30,5	1,1	DM 20	131	1
DP 25	1"	48	90	128	~189	35	48	74	80	30,5	1	DM 25	131	0,9
DP 40	1 1/2"	66	114	180	~264	50	66	140	101	39	2,4	DM 40	206	2,3

E Series



CARACTERISTICS

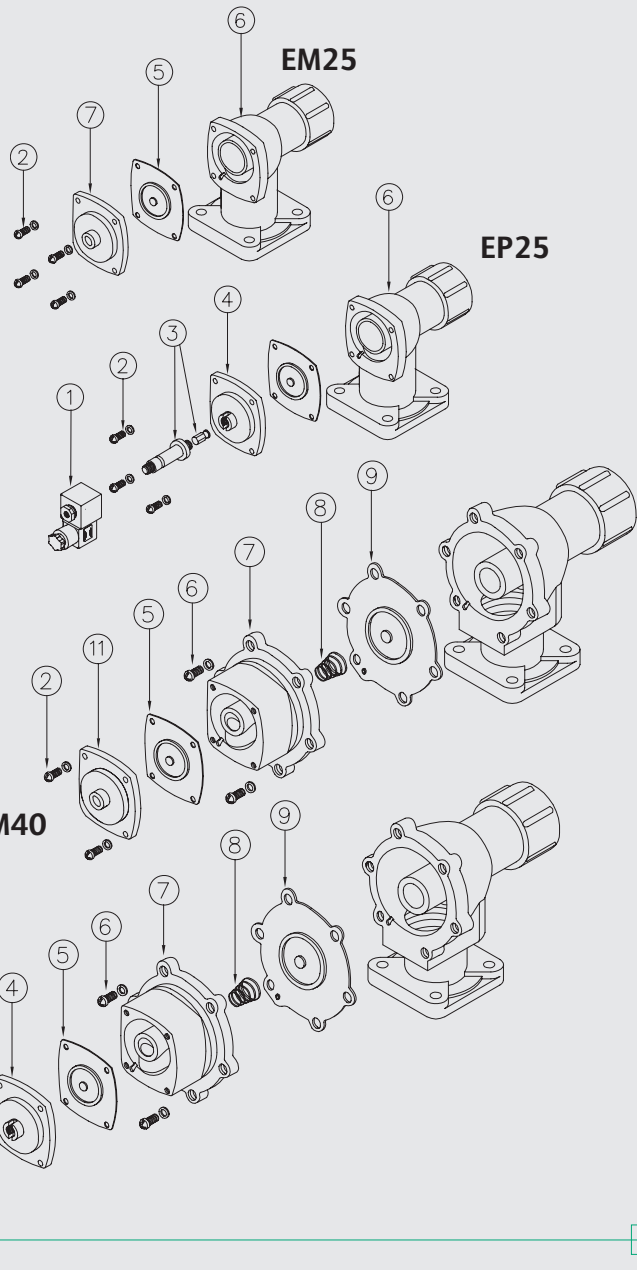
Fluid	Filtered and oilfree compressed air
Temperature range	STD diaphragm -40°C; +80°C Viton diaphragm -30°C; +200°C
Operating pressure	min 0,5; max 7,5 bar
Body & cover	Die cast aluminium
Core tube	Stainless Steel
Plunger	Stainless Steel
Screws	Stainless Steel
Coil insulation	Class H
Connector	PG 9; IP65 DIN 43650 ISO 4400
Standard voltages	230 -110 - 24V / 50-60VHz 19 VA 24VDC 15W

DESCRIPTION	EM/ EP25
1 Coil+Connector	BH10...V/50-60Hz
2 Screws+Washer	VTE6x20+VROS6
3 Pole assembly	GPC 10
4 Cover	TCOP 25/EP
5 Diaphragm	M25/EP-EM
6 Body	TCOR25FMG
7 Cover remote operated	TCOP25FM

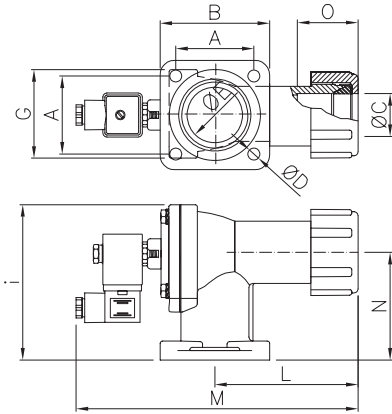
EP Integral solenoid pilot version
EM Remote pilot version

DESCRIPTION	EP/ EM40
1 Coil+Connector	BH10...V/50-60Hz
2 Screws+Washer	VTE6x20+VROS6
3 Pole assembly	GPC 10
4 Cover	TCOP 25
5 Diaphragm	M25
6 Screws + Washer	VTE8x20+VROS8
7 Main cover	TCOP 40N
8 Spring	TMOL40
9 Main diaphragm	M40
10 Body	TCOR40FMG
11 Cover remote operated	TCOP25FM

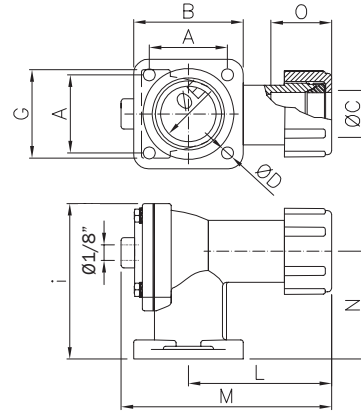
EP Integral solenoid pilot version
EM Remote pilot version



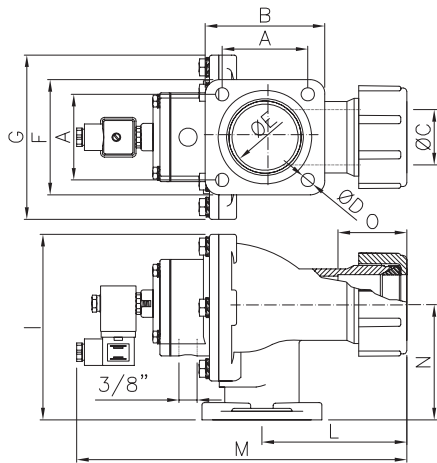
EP25



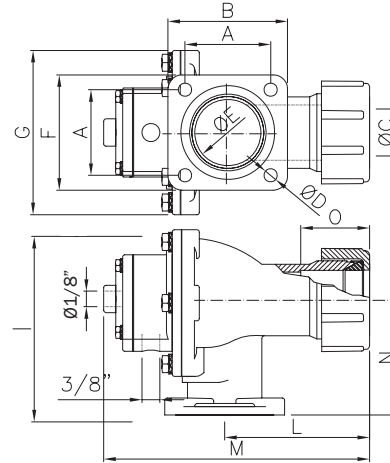
EM25



EP40



EM40



Model	Ø C (nom)	A	B	Ø D	F	G	I	L	M	N	Ø E	Weight (Kg)
EP 25	1"	60	82	9	82	74	119	106	217	81	1"½	1
EP 40	1"½	72	99	11	96	140	160	115	278	96	2"	2,3
EM 25	1"	60	82	9	82	74	106	106	159	81	1"½	0,9
EM40	1"½	72	99	11	96	140	160	115	220	96	2"	2,1

SQ Series Ø 1"

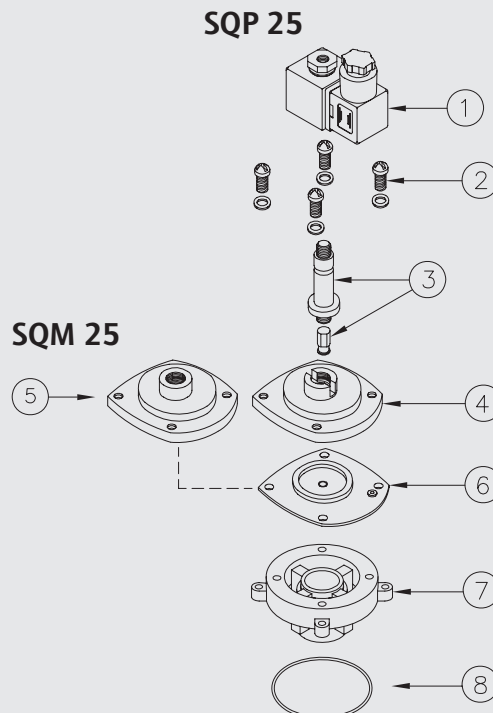


CARACTERISTICS

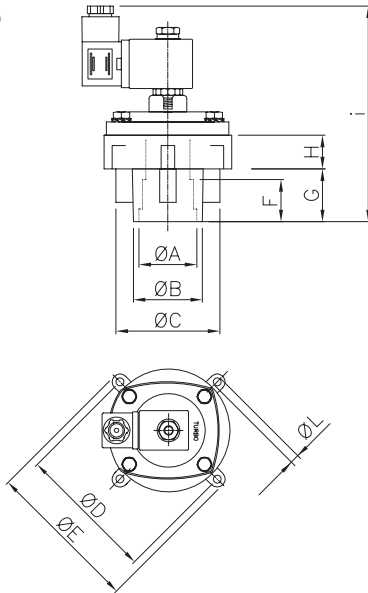
Fluid	Filtered and oilfree compressed air
Temperature range	STD diaphragm -40°C; +80°C Viton diaphragm -30°C; +200°C
Operating pressure	min 0,5; max 7,5 bar
Body & cover	Die cast aluminium
Core tube	Stainless Steel
Plunger	Stainless Steel
Screws	Stainless Steel
Coil insulation	Class H
Connector	PG 9; IP65 DIN 43650 ISO 4400
Standard voltages	230 -110 - 24V / 50-60VHz 19 VA 24VDC 15W

DESCRIPTION	SQP25/ SQM25
1 Coil+Connector	BH10...V/50-60Hz
2 Screws+Washer	VTE6x20+VROS6
3 Pole assembly	GPC 10
4 Cover	TCOP 25
5 Cover remote operated	TCOP25FM
6 Diaphragm	M25
7 Body	TCOR25IM
8 O-Ring	OR 65x4

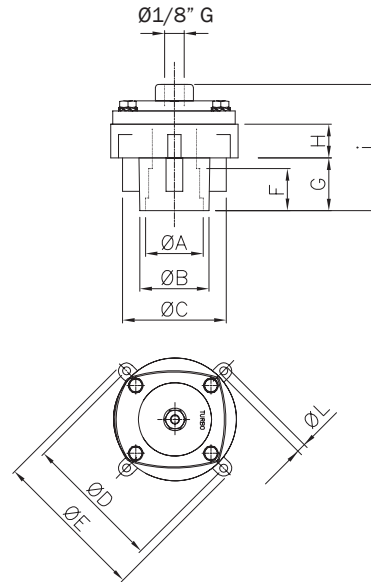
SQPO Integral solenoid pilot version
SQMO Remote pilot version



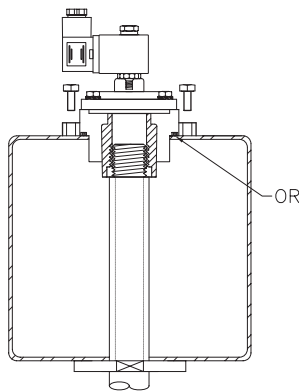
SQP 25



SQM 25



Installation SQP 25/ SQM 25



Model	Ø A	Ø B	Ø C	Ø D	Ø E	Ø M	F	G	H	I	Ø L	Weight (Kg)
SQP 25	1"	41,4	62,2	104	116	92	25	31,5	20,2	136	6,2	0,6
SQM 25	1"	41,4	62,2	104	116	92	25	31,5	20,2	78	6,2	0,5

SQ Series Ø 1"1/2



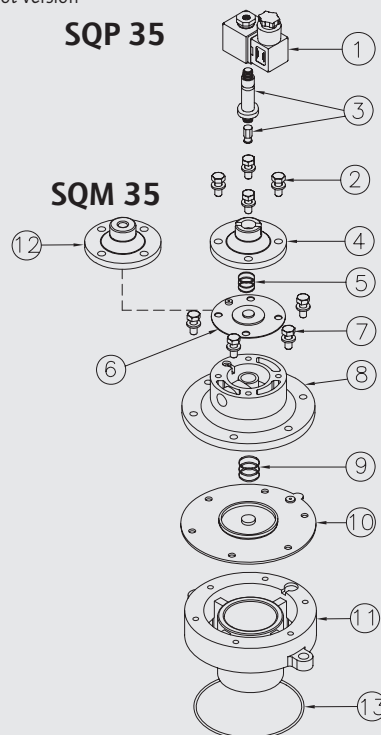
CARACTERISTICS

Fluid	Filtered and oilfree compressed air
Temperature range	STD diaphragm -40°C; +80°C Viton diaphragm -30°C; +200°C
Operating pressure	min. 0,5; max 7,5 bar
Body & cover	Die cast aluminium
Core tube	Stainless Steel
Plunger	Stainless Steel
Screws	Stainless Steel
Coil insulation	Class H
Connector	PG 9; IP65 DIN 43650 ISO 4400
Standard voltages	230 -110 - 24V / 50-60VHz 19 VA 24VDC 15W

DESCRIPTION	SQP35/SQM35
1 Coil+Connector	BH10...V/50-60Hz
2 Screws+Washer	VTE6x20+VROS6
3 Pole assembly	GPC 10
4 Cover	TCOP 10
5 Spring	TMOL25
6 Diaphragm	M10
7 Screws+Washer	VTE8x20+VROS8
8 Main cover	TCOP35N
9 Spring	TMOL40
10 Main diaphragm	M35-S
11 Body	TCOR35FMGS
12 Cover remote operated	TCOP10FM
13 O-Ring	OR 6337

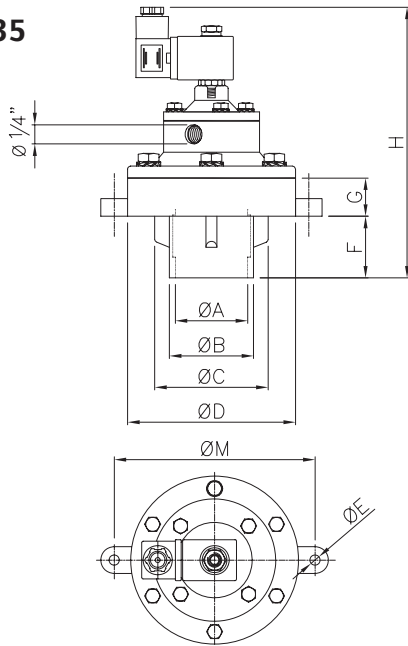
SQPO Integral solenoid pilot version

SQMO Remote pilot version

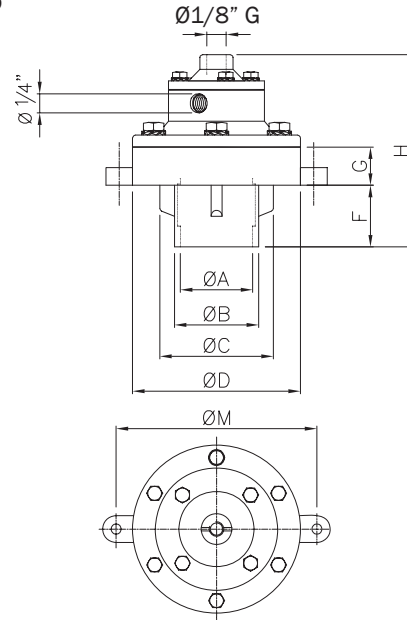


Dimensions $\varnothing 1\frac{1}{2}$ **SQ** Series

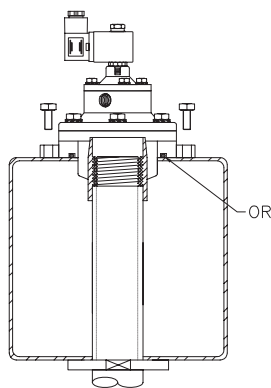
SQP 35



SQM 35



Installation SQP 35



Model	Ø A	Ø B	Ø C	Ø D	Ø E	F	G	H	Ø M	Weight (Kg)
SQPO 35	1"½	57	80,4x70,3	114	9	42	26	162	130	1,3
SQMO 35	1"½	57	80,4x70,3	114	9	42	26	104	130	1,1

SQ Series Ø 2" - 2"1/2 - 3" - 4"

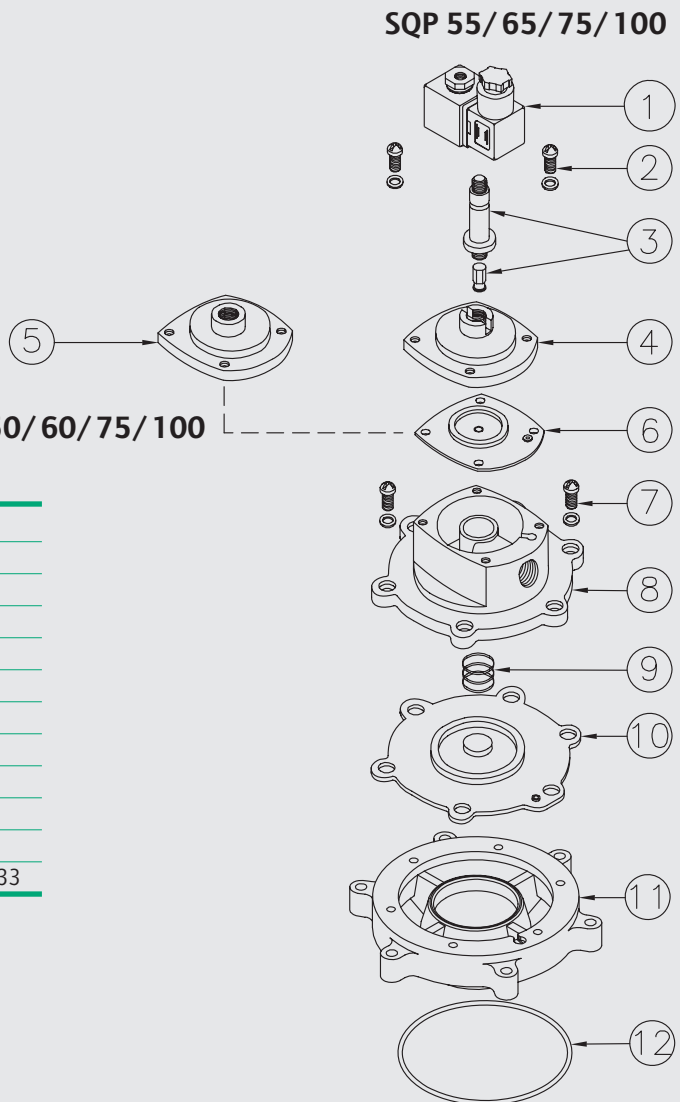


CARACTERISTICS

Fluid	Filtered and oilfree compressed air
Temperature range	STD diaphragm -40°C; +80°C Viton diaphragm -30°C; +200°C
Operating pressure	min. 0,5; max 7,5 bar
Body & cover	Die cast aluminium
Core tube	Stainless Steel
Plunger	Stainless Steel
Screws	Stainless Steel
Coil insulation	Class H
Connector	PG 9; IP65 DIN 43650 ISO 4400
Standard voltages	230 -110 - 24V / 50-60VHz 19 VA 24VDC 15W

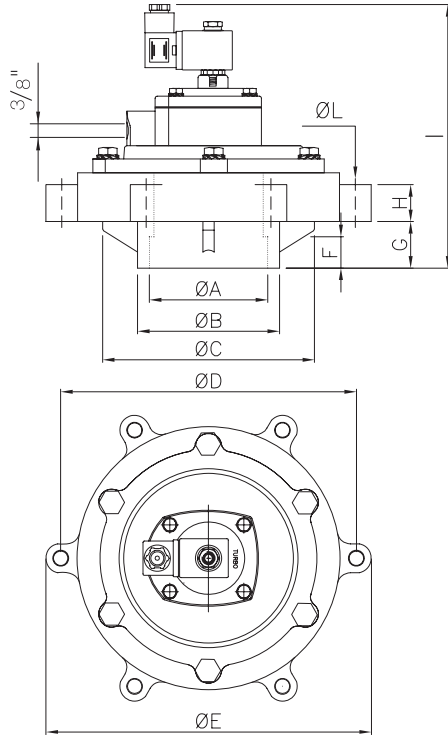
DESCRIPTION	SQP55/65
1 Coil+Connector	BH10...V/50-60Hz
2 Screws+Washer	VTE6x20+VROS6
3 Pole assembly	GPC 10
4 Cover	TCOP 25
5 Cover remote operate	TCOP25FM
6 Diaphragm	M25
7 Screws+Washer	VTE10x20+VROS10
8 Cover	TCOP50G
9 Spring	TMOL40
10 Main diaphragm	M50
11 Body	TCOR50FG - TCOR60FG
12 O-Ring	OR 133 35x5,33

DESCRIPTION	SQP75/100
1 Coil+Connector	BH10...V/50-60Hz
2 Screws+Washer	VTE6x20+VROS6
3 Pole assembly	GPC 10
4 Cover	TCOP 25
5 Cover remote operate	TCOP25FM
6 Diaphragm	M25
7 Screws+Washer	VTE10x25+VROS10
8 Cover	TCOP65G
9 Spring	TMOL40
10 Main diaphragm	M75
11 Body	TCOR75FLQ - TCOR100FLQ
12 O-Ring	OR 177 17x6,99 - OR 100 17x5,33

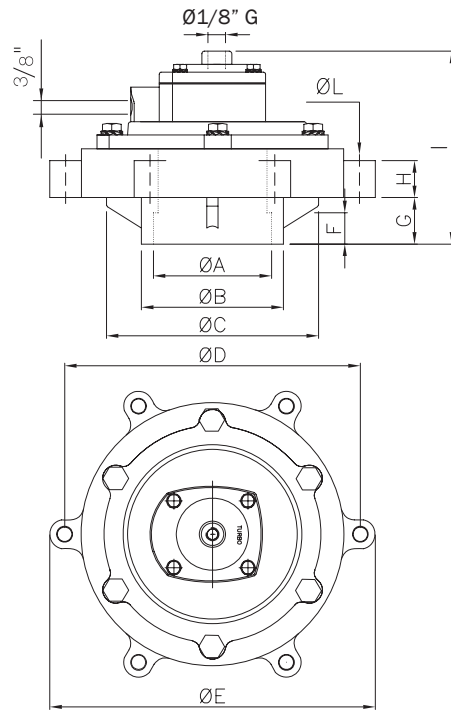


Dimensions Ø 2" - 2"½ - 3" - 4" **SQ** Series

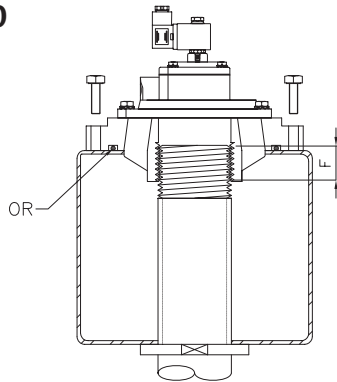
SQP 50/60/75/100



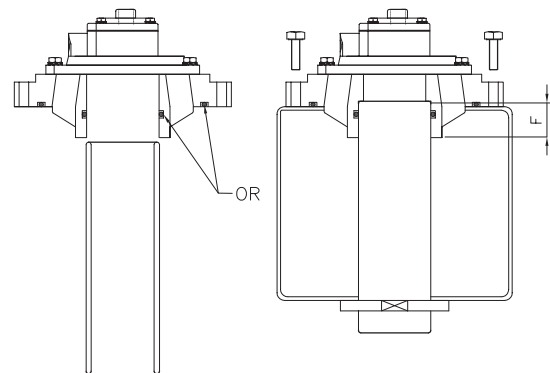
SQM 50/60/75/100



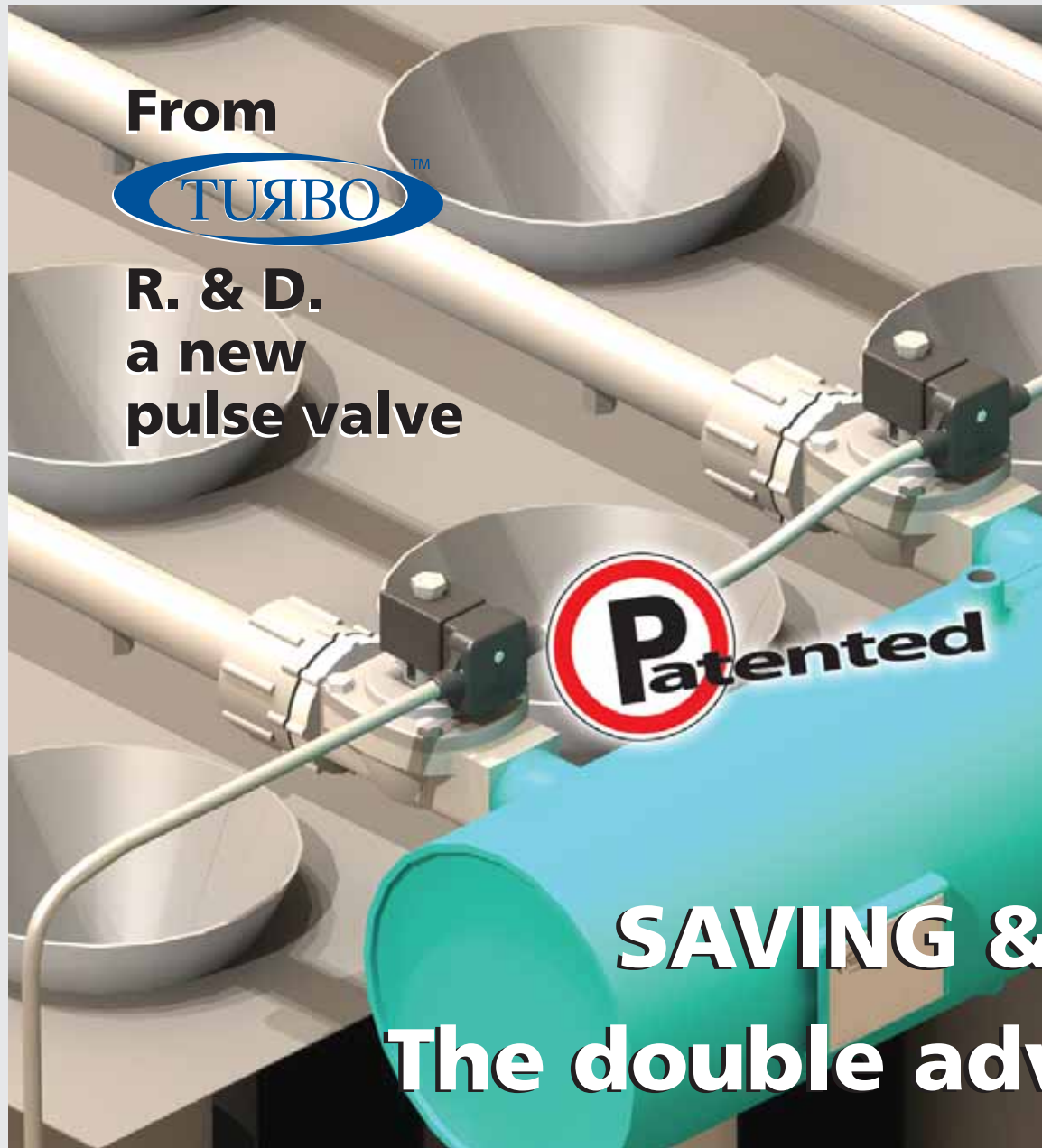
SQM 50/60
SQP 50/60



SQM 75/100 PUSH IN
SQP 75/100 PUSH IN



Model	Ø A	Ø B	Ø C	Ø D	Ø E	F	G	H	I	Ø L	Weight (Kg)
SQP 50	2"	83	126	175	195	39	60	20	211	11	2,4
SQP 60	2"½	83	126	175	195	39	60	20	211	11	2,2
SQP 75-IN	3"	107,5	161	225	247	44	35,5	27	206	11	3,6
SQP 100-IN	4" (101,6 mm)	119,5	161	225	247	44	35,5	27	206	11	3,5
SQM 50	2"	83	126	175	195	39	60	20	153	11	2,2
SQM 60	2"½	83	126	175	195	39	60	20	153	11	2
SQM 75-IN	3"	107,5	161	225	247	44	35,5	27	148	11	3,6
SQM 100-IN	4" (101,6 mm)	119,5	161	225	247	44	35,5	27	148	11	3,3



From



**R. & D.
a new
pulse valve**



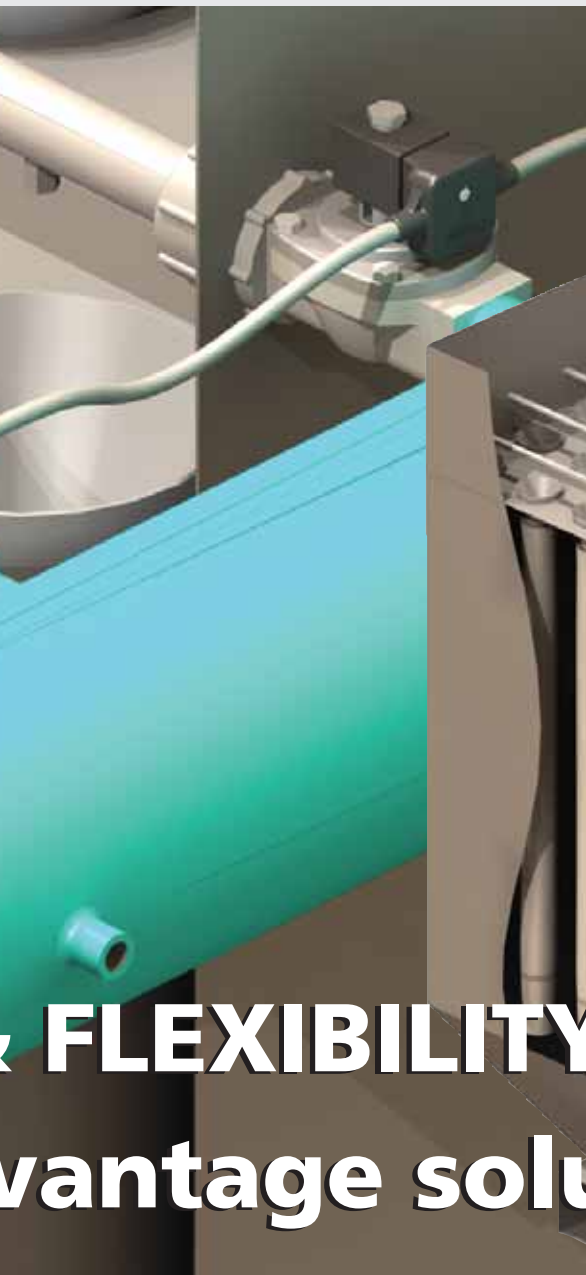
**SAVING &
The double adv**



**THE DESIGN OFFER EASE
OF MAINTENANCE THANK
TO ORIZONTAL POSITION**



**INTEGRATED COMPRESSION FITTING
ELIMINATE BULRHEAD CONNECTOR**



& FLEXIBILITY vantage solution!



**DIRECT INSTALLATION THROUGH
THE BAG HOUSE WALL**



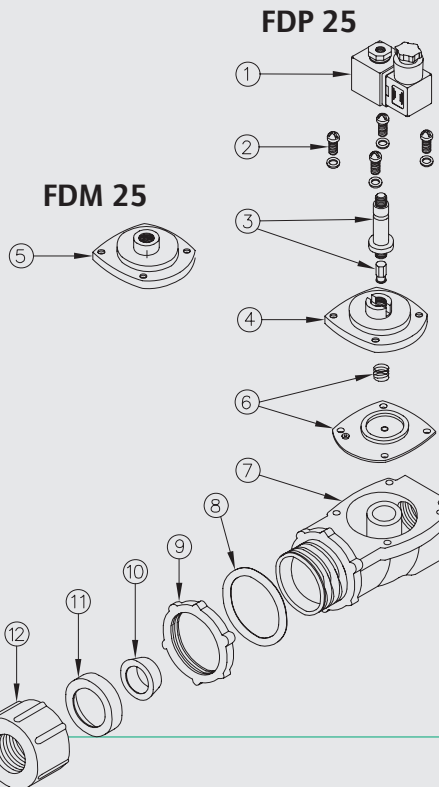
**SAME COMPONENTS THROUGH ALL
TURBO PULSE VALVES RANGE**



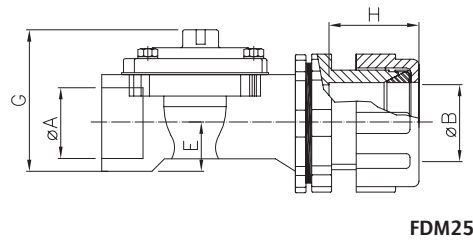
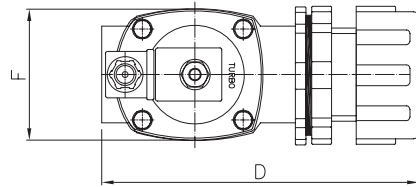
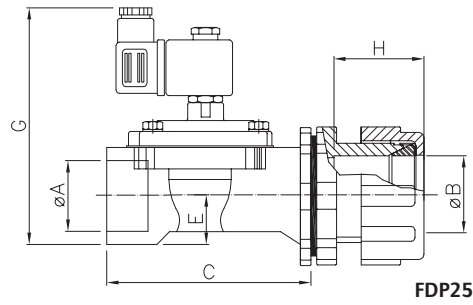
CARACTERISTICS

Fluid	Filtered and oilfree compressed air
Temperature range	STD diaphragm -40°C; +80°C Viton diaphragm -30°C; +200°C
Operating pressure	min. 0,5; max 7,5 bar
Body & cover	Die cast aluminium
Core tube	Stainless Steel
Plunger	Stainless Steel
Screws	Stainless Steel
Coill insulation	Class H
Connector	PG 9; IP65 DIN 43650 ISO 4400
Standard voltages	230 -110 - 24V / 50-60VHz 19 VA 24VDC 15W

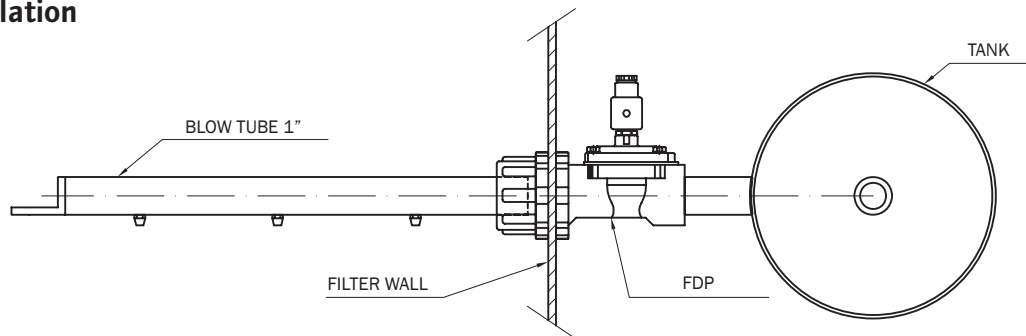
DESCRIPTION	FDP25/ FDM25
1 Coil+Connector	BH10...V/50-60Hz
2 Screws+Washer	VTE6x20+VROS6
3 Pole assembly	GPC 10
4 Cover	TCOP25
5 Cover remote operated	TCOP25FM
6 Diaphragm+Spring	M25+TMOL 10G
7 Body	TCOR25FLG/IN-OUT
8 Gasket	TROND67x53x5
9 Lock nut	TGBA25
10 Seal	GCON25
11 Seal retainer	OG25
12 Compression nut	TDAL25



FDP/ FDM with compression fitting



Installation



Model	Ø A	Ø B	C	D	E	F	G	H	Weight (Kg)
FDM 25	1"1/4	1"	114	172	27	74	74	49,5	0,9
FDP 25	1"1/4	1"	114	172	27	74	132	49,5	1

ATEX 94/9/EC

Correspondence between zones and categories

Group I (underground mining, methane and combustible dust)		Group II (Surface, gas/air or mixture of dust/air, vapors)					
Category M		Category 1		Category 2		Category 3	
1	2	G (Gases, Mists vapors Zone 0)	D (Dust Zone 20)	G (Gases, mists vapors Zone 1)	D (Dust Zone 21)	G (Gases, mists vapors Zone 2)	D (Dust Zone 22)
Equipments ensuring a very high level of protection. Guaranteed operations in case of possible errors		Equipments ensuring a very high level of protection. Equipments ensuring a very high level of protection. Explosive atmospheres are present continuously, for long period or frequently.		Equipments ensuring a high level of protection. Explosive atmospheres are likely to occur.		Equipments ensuring a normal level of protection. Explosive atmospheres are unlikely to occur or, if they do occur, are likely to do so only infrequently and for a short period only.	



C1 Bulkhead connector

PS/ PD Series

C2 Wrench

SG/ SD Series

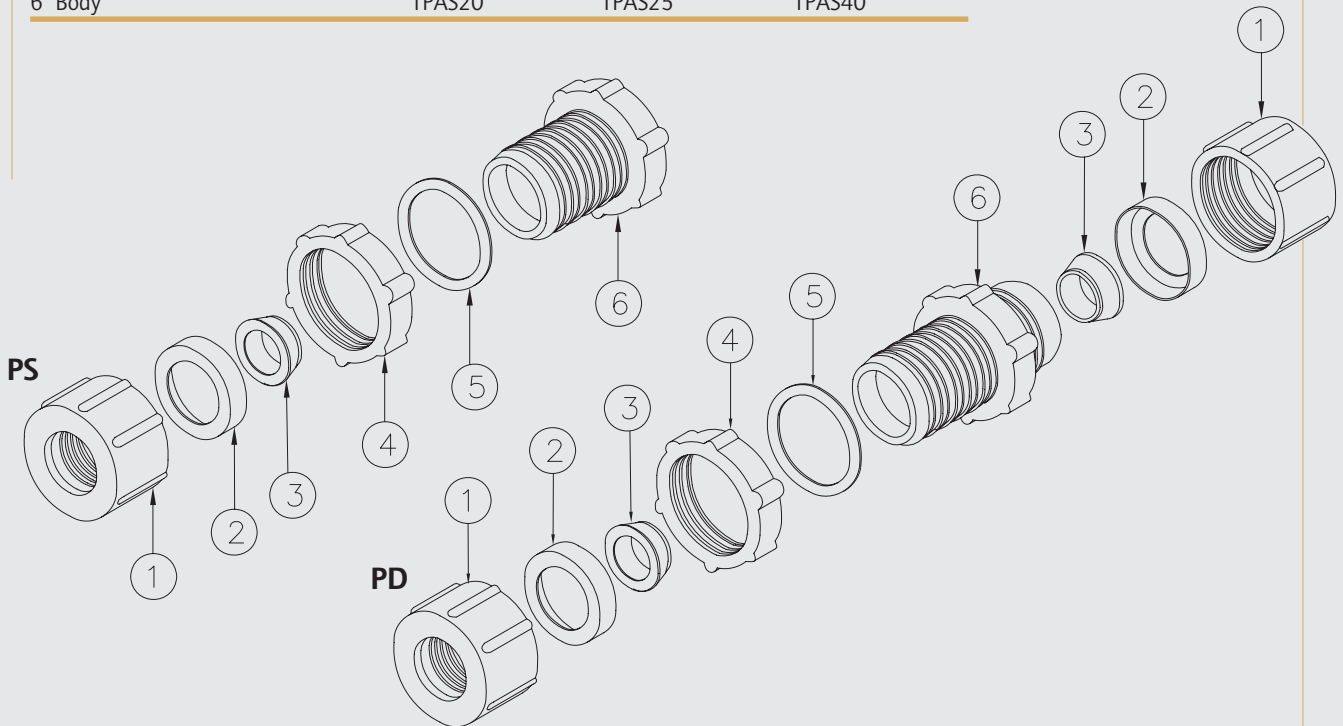
PS/PD Series



P series Bulkhead Connectores provide a simple and economic solution to installation by eliminating the need for welding or threaded pipe connections.

PD Series is a double ended connector for two-piece blow tube
PS Series is a single ended connector for one-piece blow tube

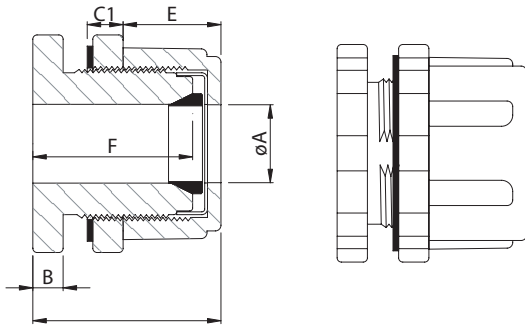
DESCRIPTIONS	PS20	PS25	PS40
1 Compression nut	TDAL20/25	TDAL25	TDAL40
2 Seal retainer	OG20	OG25	OG40
3 Seal	G CON20	G CON25	G CON40
4 Lock nut	TGBA25	TGBA25	TGBA40
5 Washer	TFIBRA70x54x1,5	TFIBRA70x54x1,5	TFIBRA90x54x1,5
6 Body	TPAS20	TPAS25	TPAS40



DESCRIPTION	PD20	PD25	PD40
1 Compression nut	TDAL20/25	TDAL25	TDAL40
2 Seal retainer	OG20	OG25	OG40
3 Seal	G CON20	G CON25	G CON40
4 Lock nut	TGBA25	TGBA25	TGBA40
5 Washer	TFIBRA70x54x1,5	TFIBRA70x54x1,5	TFIBRA90x54x1,5
6 Body	TPAS25	TPAS25	TPAS40

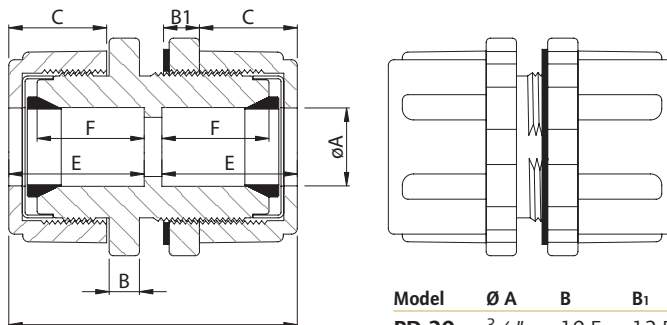
Dimensions **PS/PD** Series

PS



Model	Ø A	B	C1	D	E	F	Weight (Kg)
PS 20	3/4"	10,5	12,5	67	35	56	0,5
PS 25	1"	10,5	12,5	67	35	56	0,4
PS 40	1"1/2	14,5	16,5	92	40	79	0,8

PD

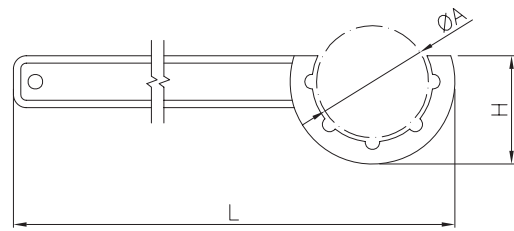
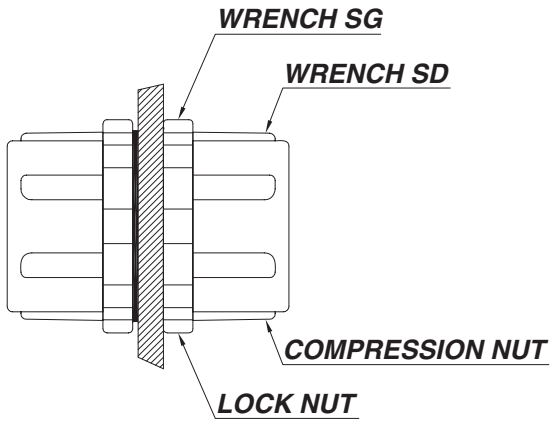


Model	Ø A	B	B1	C	D	E	F	Weight (Kg)
PD 20	3/4"	10,5	12,5	35	105	50	39	0,7
PD 25	1"	10,5	12,5	35	105	50	39	0,6
PD 40	1"1/2	14,5	16,5	40	140	67	55	1,2
PD 50	2"	14,3	19	48	139,5	66,2	53	1,35

Body , lock nut, compression nut	Die cast aluminium	
Seal	NBR	-30°C / +100°C
	Silicon	-60°C / +200°C
Mounting hole	3/4"	Wall hole ø min. 56
	1"	Wall hole ø min. 56
	1"1/2	Wall hole ø min. 72
	2"1/2	Wall hole ø min. 83



SG/SD Series



WRENCH SD FOR COMPRESSION NUT

Model	Ø	A	H	L
SD20	3/4"	61	70	350
SD25	1"	61	70	350
SD40	1"1/2	82	85	430

WRENCH SG FOR LOCK NUT

Model	Ø	A	H	L
SG20	3/4"	70	65	350
SG25	1"	70	65	350
SG40	1"1/2	90	85	430




PILOT VALVE BOXES

D1 **RCP Series**

D2 **RLD Series**

RCP RLD SERIES HOW TO ORDER

PILOT VALVE BOXES ACCORDING TO

ATEX  II 3D T100°C
IP66 NEMA 4 UL50

Turbo offer a range of pilot valve boxes for outdoor applications and hazardous locations.

Model available:

- RCP maximum length of pilot tubes 3m
- RLD maximum length of pilot tubes 10m

Tubes 6 or 8 mm should be used for pneumatic connections to the pulse valves.

Pilot valve boxes are supplied with pre-wired electric common terminals.

Thermostat with heater is recommended to prevent moisture or freezing inside of pilot valve boxes.

ORDERING

example

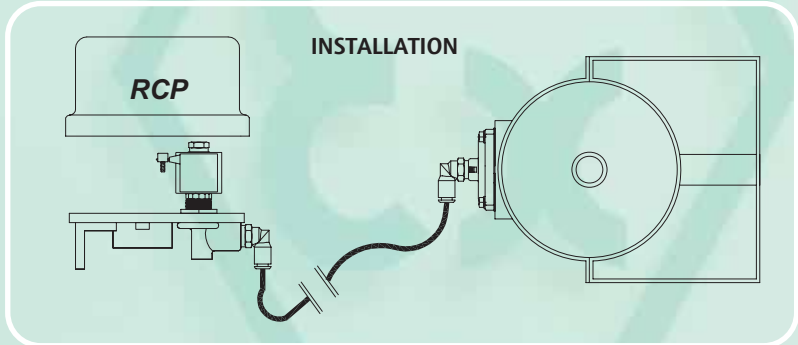
RCP 5 V/... R

RCP : PILOT VALVE BOX IP 66
RLD : PILOT VALVE BOX IP 66

NUMBER OF PILOT VALVES
RCP 1-2-3-4-5 (Small size)
RCP 6-7-8 (Medium size)
RCP 9-10-11-12 (Large size)

VOLTAGE
24V 50-60Hz = 02450
110V 50-60Hz = 11050
220V 50-60Hz = 22050
24Vcc = 024DC

Heater with thermostat (option)
Power 70W for RCP5
Power 120W for RCP8 e RCP12

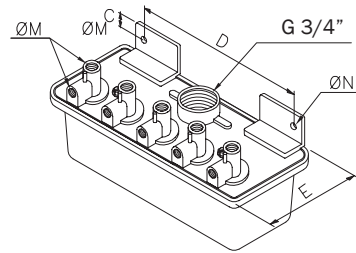
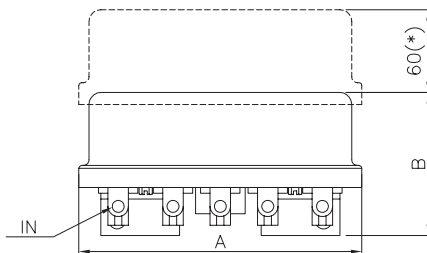




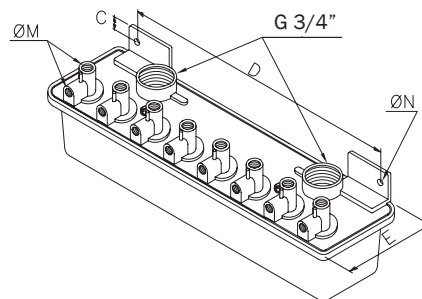
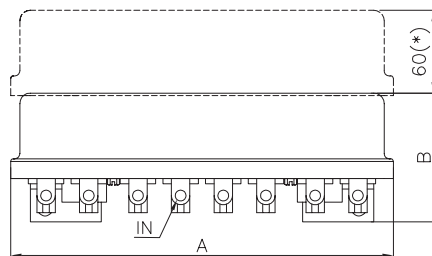
CHARACTERISTICS

Fluid	Filtered and oilfree compressed air
Operating pressure	min 0,5; max 7,5 bar
Temperature range	-20°C +80°C
W/ Heating	-40°C +80°C
Base and cover	Die cast aluminium
Core tube	Stainless Steel
Plunger	Stainless Steel
Screws	Stainless Steel
Coil insulation	Class H
Protection	IP66
Standard voltages	230 -110 - 24V 50-60VHz 19 VA 24VDC 15W

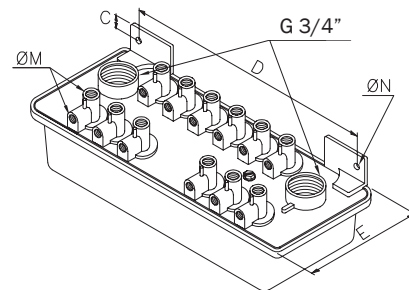
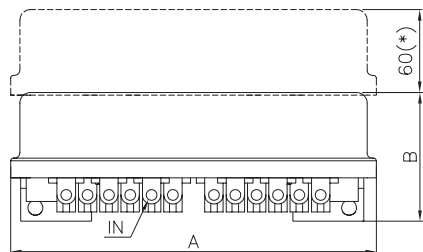
RCP5



RCP8



RCP12



Model	A	B	C	D	E	Ø M	Ø N	Weight (Kg)
RCP5	210	98	10	156	100	1/8"	11	1,7
RCP8	333	98	10	267	100	1/8"	11	3,2
RCP12	306	97	10	237	152	1/8"	11	4,4

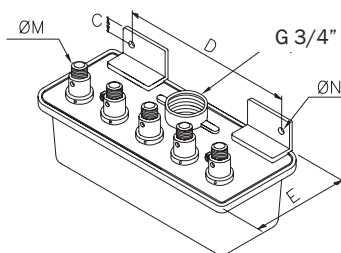
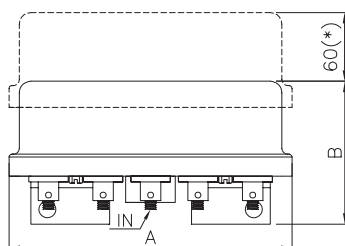
RLD Series



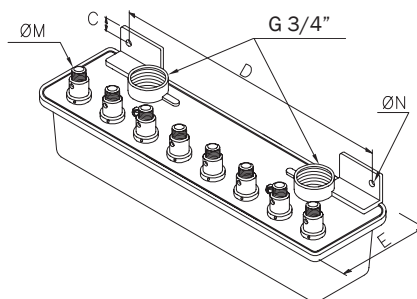
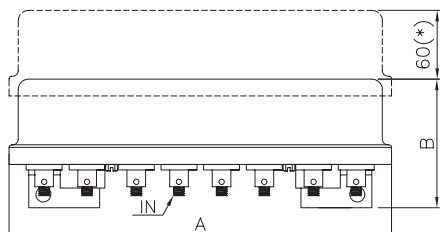
CARACTERISTICS

Fluid	Filtered and oilfree compressed air
Operating pressure	min. 0,5; max 7,5 bar
Temperature range	-20°C +80°C -40°C +80°C
Base and cover	Die cast aluminium
Core tube	Stainless Steel
Plunger	Stainless Steel
Screws	Stainless Steel
Coil insulation	Class H
Protection	IP66
Standard voltages	230 -110 - 24V 50-60VHz 19 VA 24VDC 15W

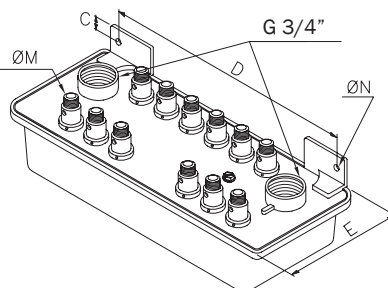
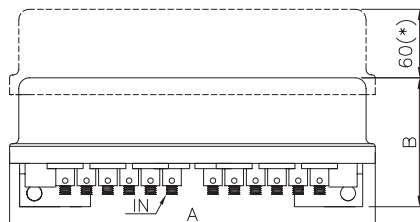
RLD5



RLD8



RLD12



Model	A	B	C	D	E	Ø M	Ø N	Weight (Kg)
RLD5	210	98	10	156	100	1/8"	11	1,7
RLD8	333	98	10	267	100	1/8"	11	3,2
RLD12	306	97	10	237	152	1/8"	11	4,4



Pilot valves

E1 **SR Series**

E2 **LD Series**

HOW TO ORDER

PILOT VALVE FOR PULSE VALVE

Designed for panel mounting or Turbo boxes. Two models are available:

- **Series SR, max. length of pilot tubes 3m**
- **Series LD, max. length of pilot tubes 10m**

Two ways normally closed. Tubes 6 or 8 mm. diameter should be used for pneumatic connections to the pulse valves.

HOW TO ORDER

example

SRM

02450

SRC : PILOT VALVE WITH CONNECTOR
SRM : PILOT VALVE SCREWS TERMINAL
LDC : PILOT VALVE WITH CONNECTOR
LDM : PILOT VALVE SCREWS TERMINAL

VOLTAGE

24V 50-60Hz= 02450
 110V 50-60Hz= 11050
 220V 50-60Hz= 22050
 24VDC = 024DC

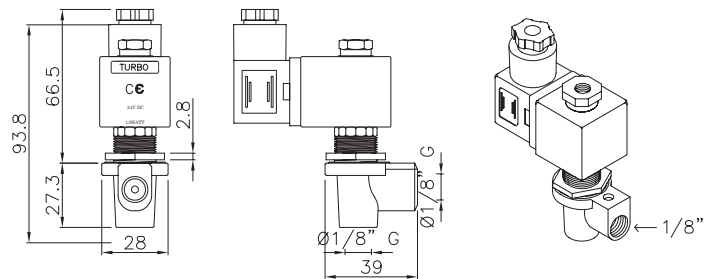
Code **SRM02450** is for pilot valve with screws terminal (**SRM**) power supply 24V 50Hz (**02450**).



CHARACTERISTICS

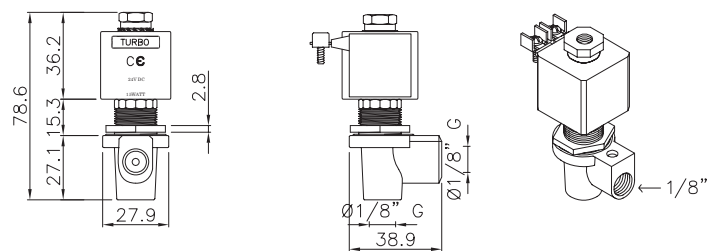
Fluid	Filtered and oilfree compressed air
Operating pressure	min. 0,5; max 7,5 bar
Temperature range	-20°C +80°C
Body	Brass
Core tube	Stainless Steel
Plunger	Stainless Steel
Coil insulation	Class H
Connector	PG9 / IP 65
Standard voltages	230 -110 - 24V/50-60VHz (19 VA) 24VDC (15W)

**SRC
IP65**

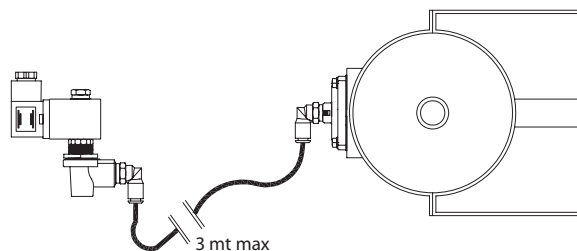


⊠ Available with ATEX coil zone 21 and zone 22

**SRM
IP00**

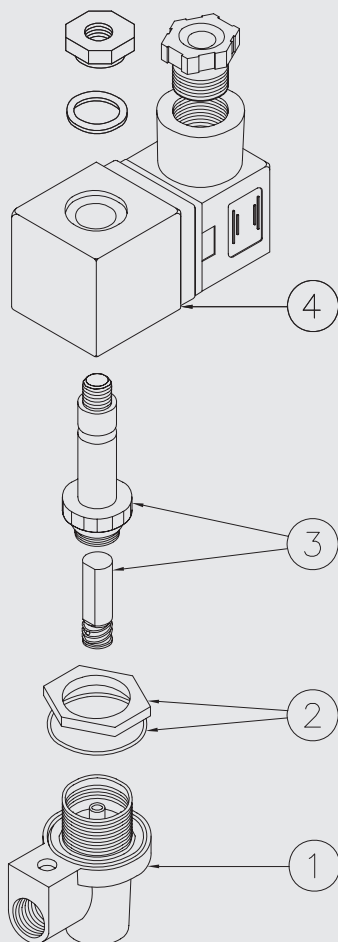


INSTALLATION



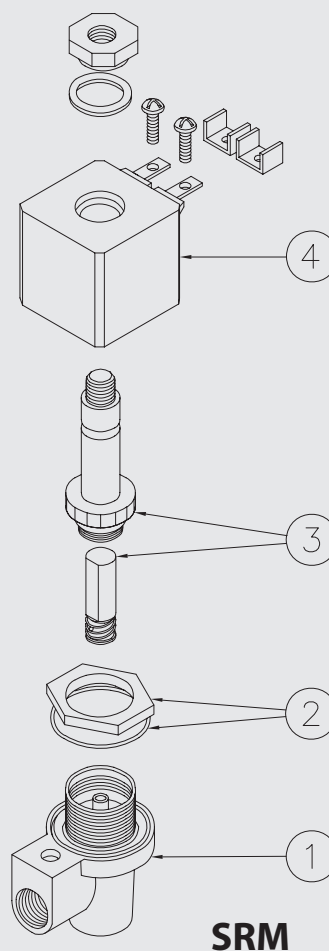
SR Series

SRC



DESCRIPTION	SRC
1 Body	PCRP
2 Lock nut + O-ring	TGHIERA 18x1 + OR3081
3 Pole assembly	GPC10/R
4 Coil + connector	BH10

DESCRIPTION	SRM
1 Body	PCRP
2 Lock nut + O-ring	TGHIERA 18x1 + OR3081
3 Pole assembly	GPC10/R
4 Coil	BH10-A9



SRM

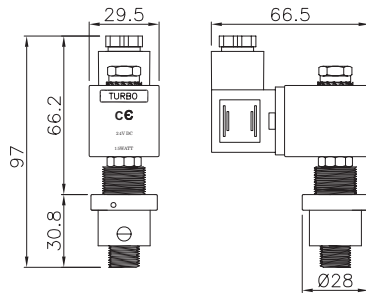
Long distance operation **LD** Series



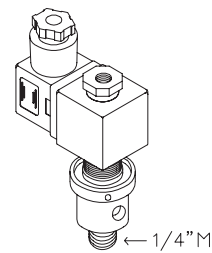
CHARACTERISTICS

Fluid	Filtered and oilfree compressed air
Operating pressure	min. 0,5; max 7,5 bar
Temperature range	-20°C +80°C
Body	Brass
Core tube	Stainless Steel
Plunger	Stainless Steel
Coil insulation	Class H
Connector	PG9 / IP 65
Standard voltages	230 -110 - 24V/50-60VHz (19 VA) 24VDC (15W)

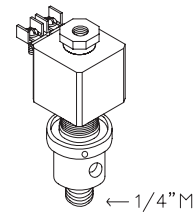
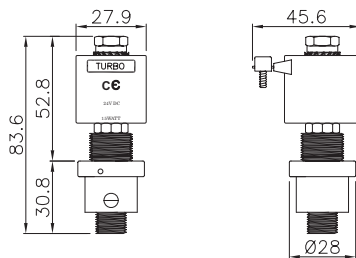
LDC



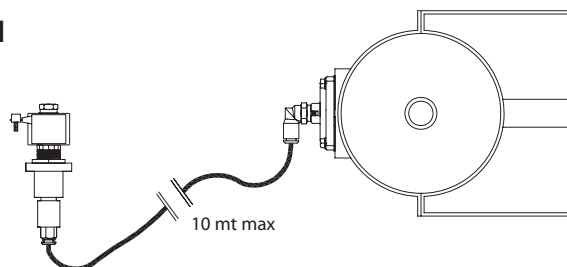
⊕ Available with ATEX coil zone 21 and zone 22



LDM

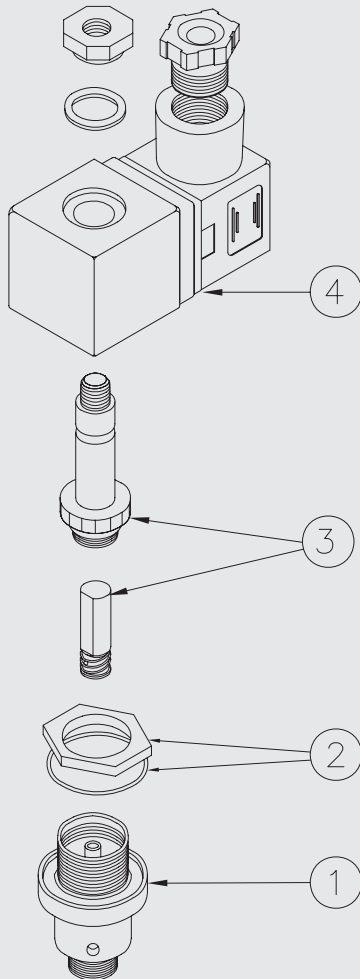


INSTALLATION



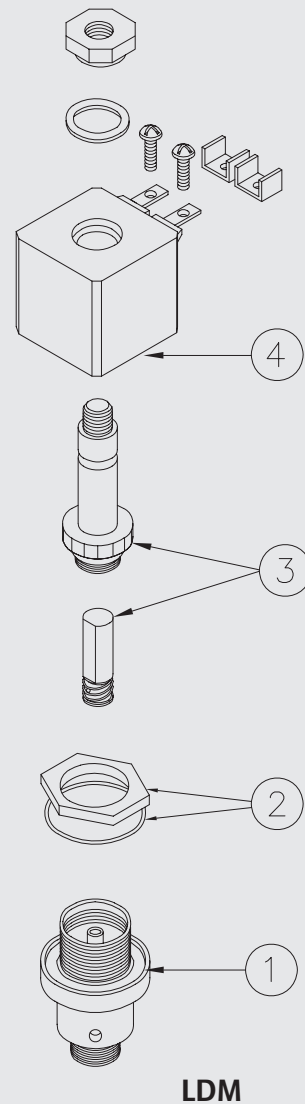
LD Series LONG DISTANCE OPERATION

LDC



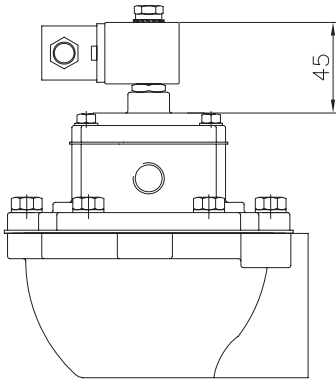
DESCRIPTION	LDM
1 Body	PCRLD
2 Lock nut + O-ring	TGHIERA18x1+OR3071
2 Pole assembly	GPC10/R
3 Coil + connector	BH10

DESCRIPTION	LDM
1 Body	PCRLD
2 Lock nut + O-ring	TGHIERA18x1+OR3071
3 Pole assembly	GPC10/R
4 Coil + connector	BH10-A9



LDM

ATEX

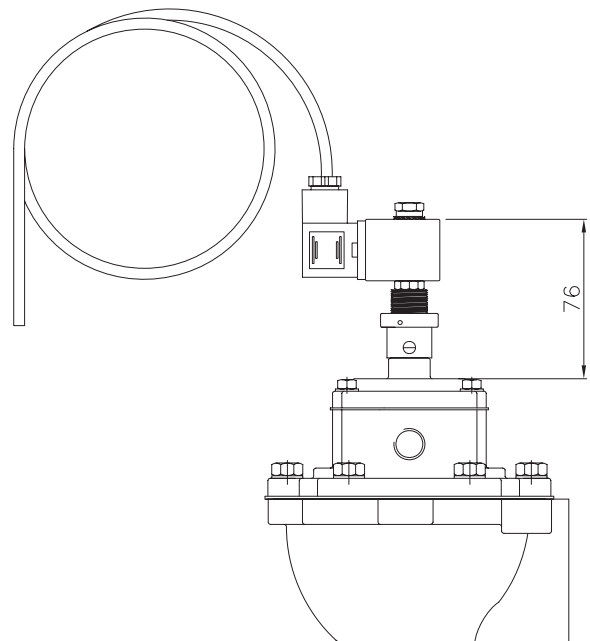


ATEX II3GD (zone 2 e 22)

Turbo pulse valves for potentially explosive atmospheres according to ATEX 94/9/EC valve is provided with moulded coil and connector IP 65 suitable for zone 2 e 22. Valve dimensions are same of standard model.



Turbo pulse valves for potentially explosive atmospheres according to ATEX 94/9/EC. Valve use encapsulated moulded soil with leads wire of different length. Pilot valve has brass body that change valve dimensions from standard model.

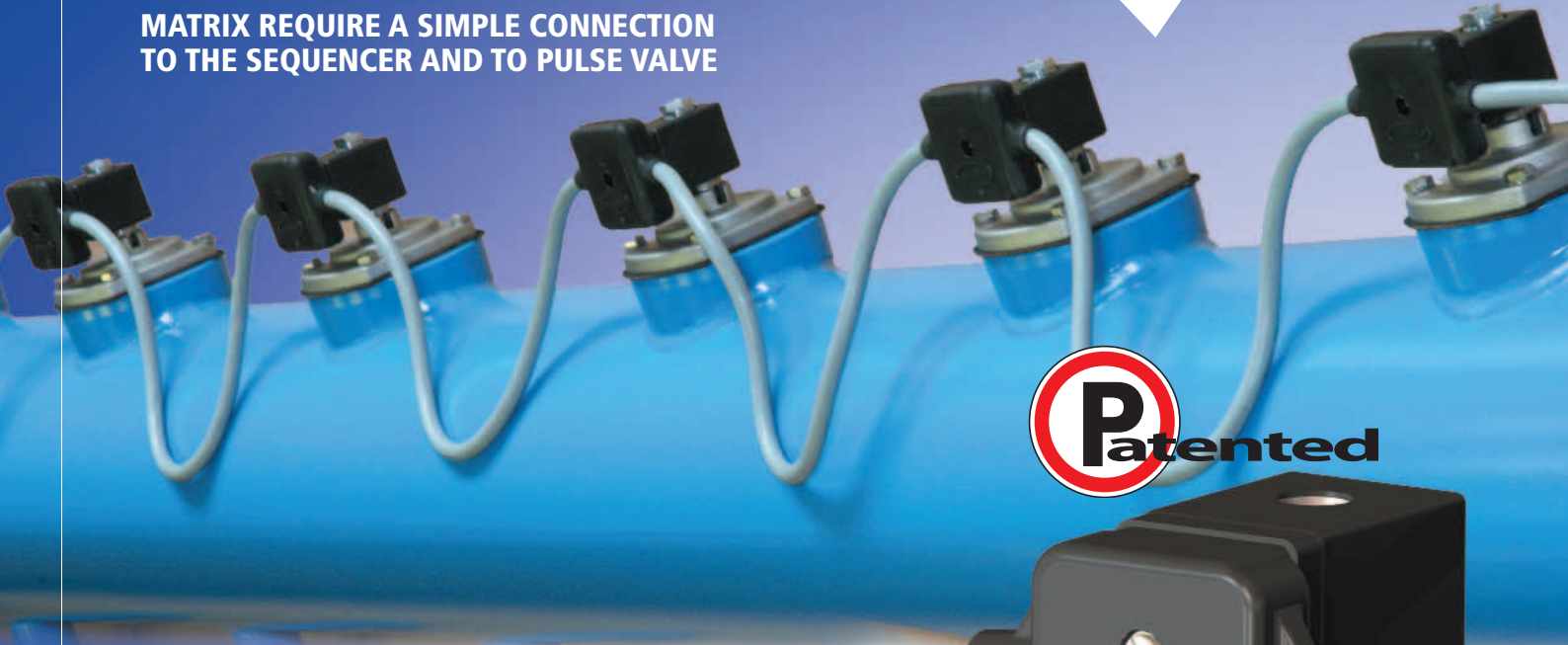


ATEX II2GD (zone 1 e 21)



MATRIX WIRING SYSTEM COST SAVING AND FLEXIBILITY

MATRIX SYSTEM IS DESIGNED TO REDUCE TIME AND COST OF WIRING INSTALLATION
MATRIX REQUIRE A SIMPLE CONNECTION TO THE SEQUENCER AND TO PULSE VALVE



F E A T U R E S

- Matrix consist in moulded prewired connectors for pulse valve
- Turbo provide Matrix connectors with desired pitch between valves
- Matrix System is compatible with any sequence controller available from the market
- Matrix can be supplied factory plugged to pulse valves on the header tank



DUST FILTER COMPONENTS



HOW TO ORDER

MATRIX 4 P200 M3 Plugged

No.° of Connectors

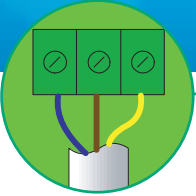
Pitch (mm)

Conduit lenght to sequencer

Terminal:

• plugged

• free wires



TECHNICAL CHARACTERISTICS

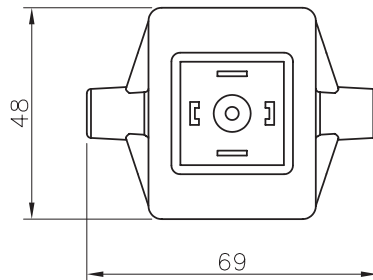
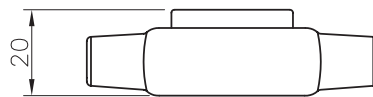
Max 12 connectors

Cable diameter. 8 mm

Protection: IP65

Temperature range: -20°C +80°C

DIMENSIONS



TURBO srl

via Po, 33 - 20031 CESANO MADERNO - Milano (ITALY)

phone: ++39 0362 574024

fax ++39 0362 574

info@turbocontrols.it

www.turbocontrols.it



TURBO srl
via Po, 33
20031 CESANO MADERNO
Milano (ITALY)
phone: ++39 0362 574024
fax ++39 0362 574092
info@turbocontrols.it
www.turbocontrols.it

© - TURBO all rights reserved, design and specifications al subject to change without notice

CATVALV/0607IT